

Reaching our potential together in Christ.

Home School Agreement

At St Mary Magdalen's we believe that:

We must Inspire our children, and in order to do this we must:

- Promote Enjoyment.
- Strive for Happiness.
- Develop an environment where children are glad to come to school.
- Celebrate our successes.
- Always aim to have health and well-being.

By accepting God's word, Love will always be at the centre of our school, and we will show this by:

- Remembering our uniqueness.
- Believing in equality and accepting and respecting differences.
- Living by our Christian values.
- Forging partnerships; • Being Forgiving.
- Accepting forgiveness.
- Showing patience.
- Being prayerful.
- Ensuring there is a safe environment both physically and emotionally for our children and staff to grow in.
- Having self-reflection; • Remembering our spirituality.
- Creating a love of learning.

When we Educate our children, we must:

- Ensure that all our children achieve their full potential.
- Remember the whole child.
- Have high expectations in all areas for all our children.
- Create a curriculum to stimulate all our children.

Child's name _____

At school we will:

- Encourage children to do their best at all times.
- Encourage children to take care of their surroundings and others around them.
- Inform parents of the children's progress at regular meetings.
- As adults on school premises, we will ALWAYS act as good role models for our children. Please note school has zero tolerance to unacceptable behaviour from any adults which is reported to LCC

Headteacher/Deputy's signature _____

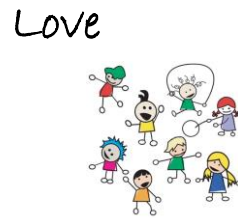
As the family we will:

- Support the school behaviour systems and policies

St. Mary Magdalen's CE Primary School, Devonshire Street, Accrington, Lancashire. BB5 1DW

Phone: 01254 232329 - Mobile: 07845 802227

Email: bursar@st-marymagdalens.lancs.sch.uk - Web: www.st-marymagdalens.lancs.sch.uk



Educate

Reaching our potential together in Christ.

- Make sure our child arrives on time at 8.55 a.m.
- Make sure our child attends regularly and provide a note of explanation if they are absent.
- Attend Parents' Evenings to discuss our child's progress.
- Never approach a Parent or Child on the yard to discuss school matters.
- Ensure your child will wear the correct uniform.
- Follow the Parent Code of Conduct

Parent's signature _____

As a pupil at St Mary Magdalen's, I will keep the school's behaviour expectations:

At St Mary Magdalen's, we are **ALWAYS**:

- Show respect for everyone
- Show respect for property
- Follow instructions
- Are ready to learn

Child's signature _____

Together we will:

- Tackle any individual needs.
- Encourage the children to keep the school's behaviour expectations.
- Support children in all aspects of school life.